



XP-IO 2000 with LCD

### ⊗ Operating Information ⊗

- 110/250 VAC
- 10-36VDC Unit Available
- 13W Consumption (AC)
- 7W Consumption (DC)
- -10 °C to 85 °C Operation

### ⊗ Gauges Supported ⊗

- Renegaugue
- Sentry (Dual or Single)
- CWL-1000
- Guardian
- Panex
- Spartek

### ⊗ Communication Ports ⊗

- 2 x RS-232
- 1 x RS-485
- 10-BASE-T Option

### ⊗ Port Usage Options ⊗

- 1 RS-232 dedicated to XP-IO PC pgm
- ModBus RTU
- Modem Support (Radio/Cell)
- TCP/IP via Ethernet (optional)

### ⊗ Inputs ⊗

- Four 4-20mA inputs (12-bit)
- One 16-bit A/D (tool current)

### ⊗ Outputs ⊗

- Four 4-20mA outputs (16-bit)
- 2 Pressure-controlled relays

### ⊗ Memory ⊗

- 2 Meg Flash for Data Logging
- 4 Meg also available
- CompactFlash Option (>1gig)

### ⊗ Enclosure ⊗

- NEMA-4 type Water Resistant
- Anodized Aluminum

## Multi-Gauge XP-IO 2000

The Multi-Gauge XP-IO 2000 was designed to support up to 8 wells with a maximum of two gauges installed (single TEC) in each. See below for other details.

### Analog Inputs

The Multi-Gauge XP-IO 2000 comes with four channels of 4-20mA inputs (12bit). These inputs are fully configurable using the XP-IO PC Program. Set the offset, span, and units of measure, and monitor these on the display and/or choose to log them into memory.

### Analog Outputs

The Multi-Gauge XP-IO 2000 comes with four channels of 4-20mA outputs (16bit). Select a gauge's pressure or temperature, the span and offset, and the XP-IO will drive the translated value onto an output as it is decoded from downhole.

### Memory Logging

The Multi-Gauge XP-IO 2000 comes standard with 2Meg of Flash and a 4Meg option is also available. There is also a CompactFlash card option which extends the memory to beyond 1gig. The 2Meg can hold data from One Gauge (pressure and temp.) at One Minute Updates for One Year. The data is retrieved via an RS-232 port using the supplied PC Program and can easily be imported to other applications such as a spreadsheet.

### ModBus

The Multi-Gauge XP-IO 2000 supports the RTU protocol of the ModBus standard, and this may be accomplished via the XP-IO's RS-485 or RS-232 port. These interfaces are fully configurable (parity, baudrate, etc.). As a slave device, XP-IO data from the gauges (i.e. Pressure and Temperature) can be polled, as well as, data from any of the 4-20mA inputs. Time and date is also available.

### Modem Support

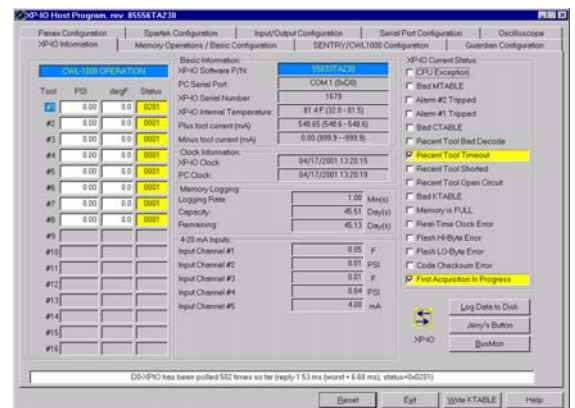
The Multi-Gauge XP-IO 2000 supports modem communications via the RS-232 port. A User may dial into the unit using the supplied PC Program, or the port can be used to talk ModBus over a radio-modem, cellular-modem, or regular modem.

### Pressure Controlled Relay Contacts

The Multi-Gauge XP-IO 2000 comes with two relay contacts (1/2A at 115VAC), which are controlled by software. When a selected gauge's pressure rises above (or falls below) a set pressure, the contact is closed. Ideal for alarms and/or pump control.

### XP-IO 2000 PC Program

The XP-IO 2000 comes with a PC Program that runs under Windows 95/98/ME/NT4.0. Installed from a CD-ROM, it communicates with the XP-IO 2000 via a standard RS-232 port. The program allows full configuration of the unit, as well as, data memory retrieval, and real-time logging of data to PC hard disk.



Have a special application?  
Call today!