

PDX Surface System

⊗ Operating Information ⊗

- 110/250 VAC
- 10-36VDC
- 3W Consumption
- 0 °C to 75 °C Operation (TBD)

⊗ Gauges Supported ⊗

- Sentry (Dual or Single)
- CWL-1000
- Guardian
- Panex
- Spartek

⊗ Communication Ports ⊗

- 1 x RS-232
- 1 x RS-485/232 (jumper)

⊗ Port Usage Options ⊗

- 1 RS-232 dedicated to PDX PC pgm
- ModBus RTU
- Modem Support (Radio/Cell)
- LCD (as shown)

⊗ Inputs ⊗

- One TEC 16-bit A/D (tool current)
- One isolated digital input

⊗ Outputs ⊗

- Two 4-20mA outputs (16-bit)
- 1 Pressure-controlled relay

⊗ Enclosure ⊗

- NEMA-4x
- Fiberglass

⊗ Physical Dimensions ⊗

- Weight – 4 lbs.
- 7" w x 8" h x 5" d

PDX

The PDX was designed to support a single well with a maximum of two gauges installed. It is well suited for use as a portable unit for installations and/or troubleshooting.

DSP Technology

The PDX uses a powerful Digital Signal Processor (DSP) which enables tight filtering and reduction of noise from gauge transmissions. This can significantly increase decode-ability in noisy pump installations.

Analog Outputs

The PDX comes with two channels of 4-20mA outputs (16bit). Select a gauge's pressure or temperature, the span and offset, and the PDX will drive the translated value onto an output as it is decoded from downhole.

ModBus

The PDX supports the RTU protocol of the ModBus standard, and this may be accomplished via the PDX's RS-485/232 port. This interface is fully configurable (parity, baudrate, etc.). As a slave device, PDX data from the gauges (i.e. Pressure and Temperature) can be polled.

Modem Support

The PDX supports modem communications via the RS-232 port. A User may dial into the unit using the supplied PC Program, or the port can be used to talk ModBus over a radio-modem, cellular-modem, or regular modem.

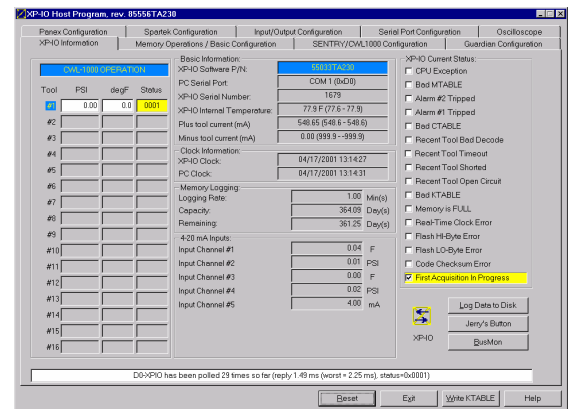
Pressure Controlled Relay Contact

The PDX comes with one relay contact ($\frac{1}{2}$ A at 115VAC), which is controlled by software. When a selected gauge's pressure rises above (or falls below) a set pressure, the contact is closed. Ideal for alarms and/or pump control.

PDX PC Program

The PDX comes with a PC Program that runs under Windows 95/98/ME/NT4.0/2000/XP. Installed from a CD-ROM, it communicates with the PDX via a standard RS-232 port. The program allows full configuration of the unit, as well as, data memory retrieval, and real-time logging of data to PC hard disk.

Have a special application?



Call today!